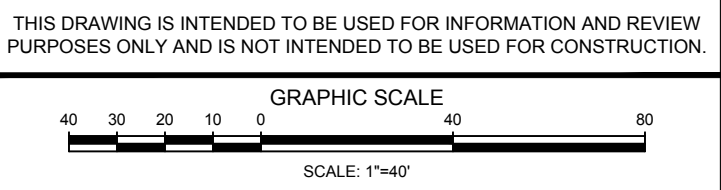




- NOTES:
1. In General, Lower Case Text Identifies Existing Features/Conditions
 2. IN GENERAL, *UPPER CASE TEXT IDENTIFIES PROPOSED FEATURES/CONDITIONS* UNLESS OTHERWISE SPECIFIED.
 3. FOR LOCATION OF UNDERGROUND ELECTRIC, TELEPHONE, GAS, CABLE TV AND OTHER FACILITIES OF PUBLIC UTILITY COMPANIES, INQUIRE OF "CALL BEFORE YOU DIG, INC." AT 1-800-922-4455.



SIDEWALK CONSTRUCTION

BRIDGE STREET HADDAM, CONNECTICUT

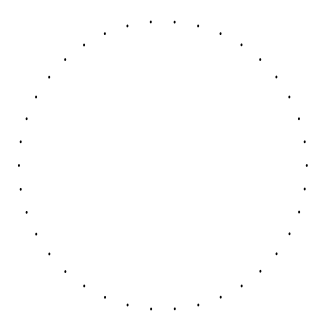
SCHEMATIC LAYOUT

PRELIMINARY

ANY ALTERATIONS TO THIS DRAWING MADE WITHOUT THE EXPRESSED WRITTEN APPROVAL OF NATHAN L. JACOBSON & ASSOCIATES, INC. WILL BE AT THE SOLE RISK OF THE PERSON OR FIRM MAKING SUCH UNAUTHORIZED ALTERATIONS AND NATHAN L. JACOBSON & ASSOCIATES, INC. WILL NEITHER HAVE NOR ACCEPT ANY LIABILITY OR LEGAL EXPOSURE ARISING FROM SAID UNAUTHORIZED ALTERATIONS.

N Nathan L. Jacobson & Associates, Inc.
86 Main Street P.O. Box 337
Chester, Connecticut 06412-0337
Tel: (860) 526-9591 Fax: (860) 526-5416
www.nlja.com
Consulting Civil and Environmental Engineers Since 1972

NOT VALID WITHOUT ORIGINAL SEAL



GEOFFREY L. JACOBSON, P.E.
CT REGISTRATION No. 12363

© COPYRIGHT 2016 NATHAN L. JACOBSON & ASSOCIATES, INC.
ALL RIGHTS RESERVED.

REVISIONS		
No.	DESCRIPTION	DATE

DATE: OCTOBER 2016
SCALE: 1"=40'
PROJECT No.: 09840055
CADD FILE: 09840055LIDAR
DESIGNED: GLJ
DRAWN: CEB
CHECKED:

SHEET No.:

1 OF 1