



235 ROUTE 80 - P.O. BOX 666  
KILLINGWORTH, CONNECTICUT  
06419  
PHONE: 860.663.2384  
NEMERGUTCONSULTING.COM

ROGER D. NEMERGUT  
PROFESSIONAL ENGINEER  
LIC. NO. 10008  
JASON A. NEMERGUT  
PROFESSIONAL ENGINEER  
LIC. NO. 26088

COPYRIGHT © 2024 NEMERGUT CONSULTING  
NEMERGUT CONSULTING  
RESERVES ITS COMMON LAW  
COPYRIGHT AND OTHER  
PROPERTY RIGHTS IN THESE  
PLANS. THESE DOCUMENTS ARE  
NOT TO BE REPRODUCED,  
CHANGED OR COPIED IN ANY  
FORM OR MANNER WHATSOEVER  
WITHOUT FIRST OBTAINING THE  
EXPRESSED WRITTEN  
PERMISSION OF NEMERGUT  
CONSULTING

THIS DRAWING SHALL NOT BE  
USED FOR CONSTRUCTION  
UNLESS THE DESIGN  
ENGINEER'S RAISED  
PROFESSIONAL SEAL APPEARS  
ON THE PLAN; AND THE  
OWNER/CONTRACTOR HAS  
CONTACTED THE DESIGN  
ENGINEER TO VERIFY THAT THEY  
ARE IN POSSESSION OF THE  
LATEST APPROVED DESIGN  
PLANS.

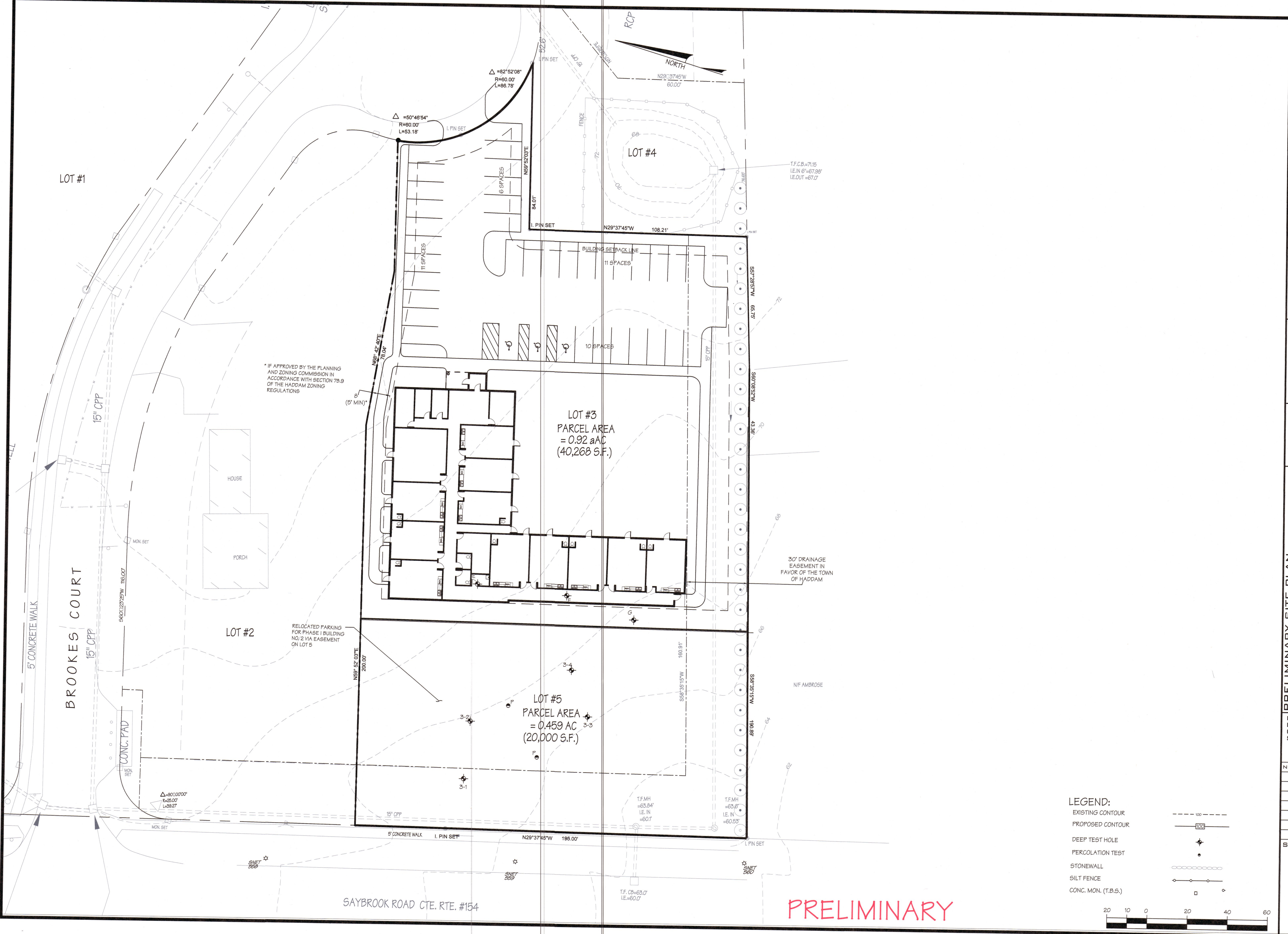
PRELIMINARY SITE PLAN

DBP LLC  
DBP RETAIL DEVELOPMENT - PHASE 1  
1572 SAYBROOK ROAD (CT ROUTE 154) &  
6 BROOKES COURT  
HADDAM CONNECTICUT

DATE: 2-7-24  
DRAWN BY: J.A.N.  
CHECKED BY: R.D.N.  
SCALE: 1" = 20'

NO.	DATE	REVISIONS

SHEET



\* IF APPROVED BY THE PLANNING AND ZONING COMMISSION IN ACCORDANCE WITH SECTION 7B.9 OF THE HADDAM ZONING REGULATIONS

RELOCATED PARKING FOR PHASE I BUILDING NO. 2 VIA EASEMENT ON LOT 5

30' DRAINAGE EASEMENT IN FAVOR OF THE TOWN OF HADDAM

N/F AMBROSE

SAYBROOK ROAD CTE. RTE. #154

PRELIMINARY

- LEGEND:
- EXISTING CONTOUR
  - PROPOSED CONTOUR
  - DEEP TEST HOLE
  - PERCOLATION TEST
  - STONEWALL
  - SILT FENCE
  - CONC. MON. (T.B.S.)

