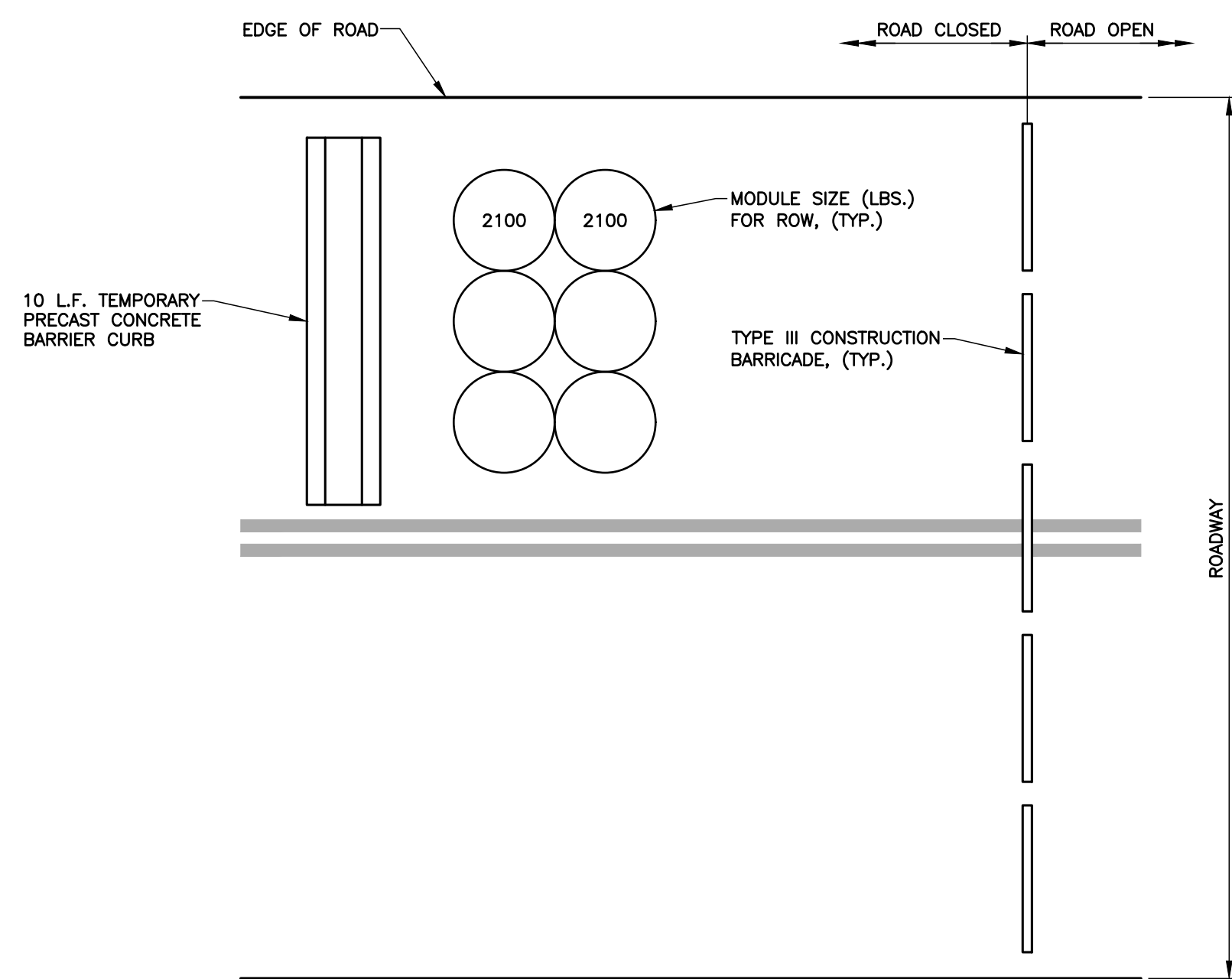


TEMPORARY CONSTRUCTION ROAD CLOSURE PLAN
SCALE: 1"=40'

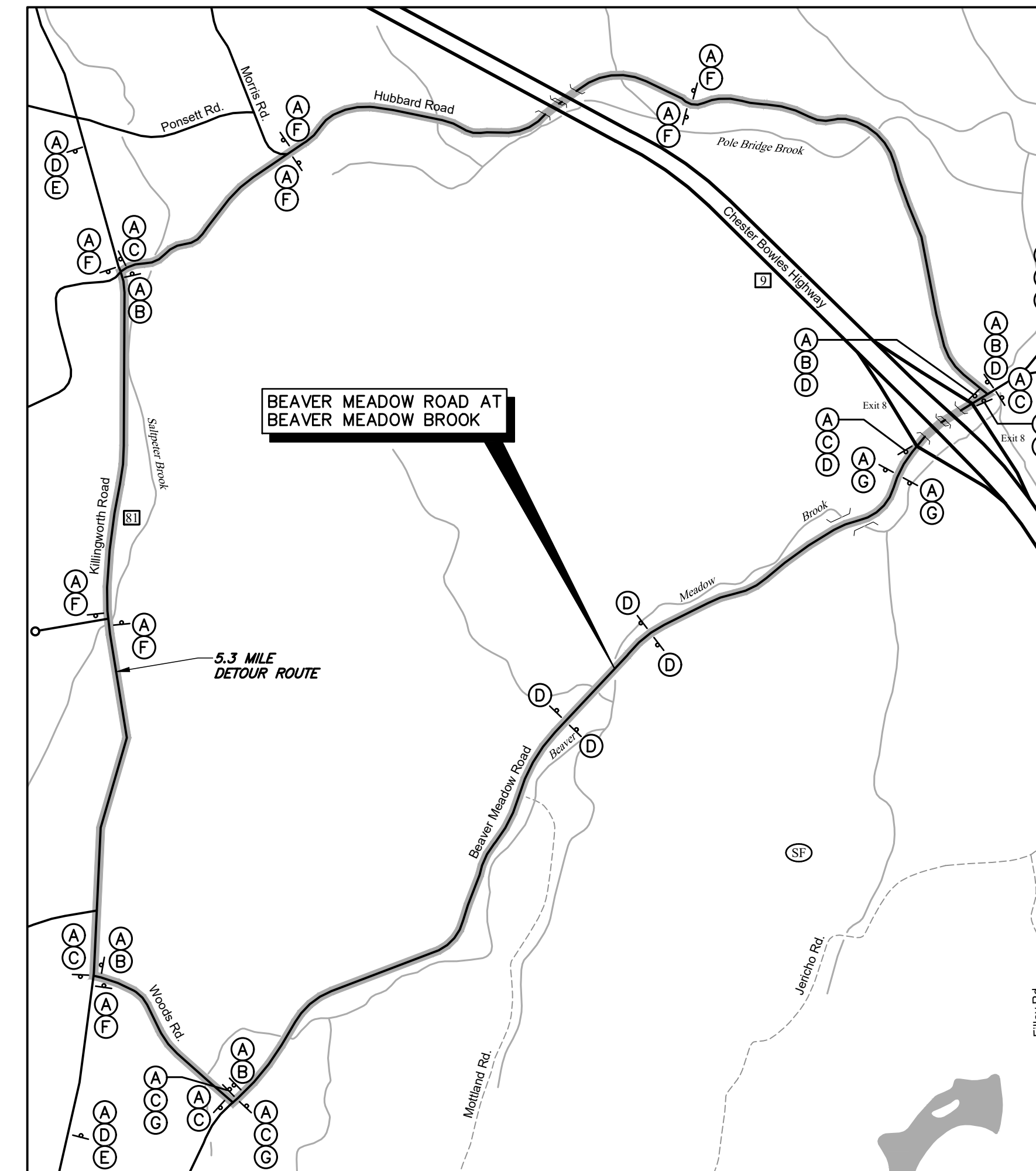
CONTRACTOR NOTE:

THE CONTRACTOR SHALL TO THE MAXIMUM FEASIBLE EXTENT, MINIMIZE THE PERIOD DURING WHICH BEAVER MEADOW ROAD IS CLOSED TO TRAFFIC FOR THE CULVERT WORK. THE CONTRACTOR SHALL SCHEDULE ALL WORK WHICH MUST OCCUR PRIOR TO INSTALLATION OF THE PRECAST CONCRETE BOX CULVERT COMPONENTS, TO BE PERFORMED IN CONTINUOUS COORDINATED SUCCESSION IMMEDIATELY PRECEDING THE DATE ESTABLISHED FOR DELIVERY AND INSTALLATION OF THE COMPONENTS. THIS REQUIREMENT SHALL BE INTEGRATED WITH THE OVERALL PROJECT SCHEDULE.



TEMPORARY IMPACT ATTENUATION SYSTEM
N.T.S.

- NOTES:**
- IMPACT ATTENUATION SYSTEM DESIGNED FOR INITIAL SPEED FOR 1,800 LB. AND 4,400 LB. VEHICLE OF 38 MPH, SUBSEQUENT DECELERATION <15g, VELOCITY AFTER LAST BARRIER <10 MPH AND UNRESTRAINED PASSENGER IMPACT <30 FPS.
 - INSTALL IN MIRROR IMAGE TO THAT SHOWN, AS NEADED.



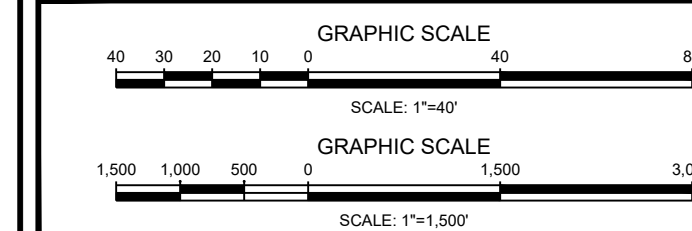
TEMPORARY CONSTRUCTION DETOUR PLAN
SCALE: 1"=1,500'

| CONSTRUCTION SIGN LEGEND | | | |
|--------------------------|-------------------|-----------|---|
| SIGN DESIGNATION | CTDOT SIGN NUMBER | DIMENSION | SIGN FACE |
| (A) | 80-9913 | 60"x10" | BEAVER MEADOW RD. |
| (B) | 80-9710R | 30"x24" | DETOUR ➔ |
| (C) | 80-9710L | 30"x24" | DETOUR ➔ |
| (D) | 80-9081 | 60"x30" | ROAD CLOSED TO THRU TRAFFIC |
| (E) | 80-9913 | 60"x10" | DETOUR AHEAD |
| (F) | 80-9710 | 30"x24" | DETOUR ↑ |
| (G) | 80-9078 | 60"x30" | BRIDGE CLOSED 00 MILES AHEAD LOCAL TRAFFIC ONLY |
| (H) | 80-9082 | 48"x30" | BRIDGE CLOSED |
| (I) | 31-0553 | 36"x36" | STOP |

MAINTENANCE AND PROTECTION OF TRAFFIC NOTES:

- THE CONTRACTOR SHALL BE SOLELY RESPONSIBLE FOR MAINTENANCE AND PROTECTION OF TRAFFIC, INCLUDING FURNISHING ALL NECESSARY TRAFFIC CONTROL AND SAFETY SIGNS, DEVICES, FLAGMAN, ETC.
- NOTIFY THE TOWN AT LEAST FOURTEEN (14) DAYS IN ADVANCE OF AN ANTICIPATED ROADWAY CLOSURE.
- FOR SIGN FACE MATERIAL DETAILS, SEE CTDOT STANDARD SHEET TR-1220_01.
- FOR SIGN INSTALLATION DETAILS, SEE CTDOT STANDARD SHEET TR-1220_02 AND SHEET TR-1208_02.
- THE PLACEMENT OF SIGNS SHALL NOT OBSCURE ANY PRESENT SIGNING OR SIGHTLINES FROM DRIVEWAYS OR INTERSECTING ROUTES. COORDINATE EXACT PLACEMENT OF SIGNS WITH THE ENGINEER.
- SIGNS SHALL BE PLACED ON THE SPECIFIC METAL SIGN POSTS. THEY SHALL NOT BE PLACED ON EXISTING POSTS, UTILITY POLES OR TREES.
- LOCATION AND DISTANCE BETWEEN CONSTRUCTION SIGNS MAY BE REVISED BY THE ENGINEER TO MEET FIELD CONDITIONS.
- EXISTING TRAFFIC SIGNS SHALL BE REMOVED OR COVERED WITH AN OPAQUE COVER IF IN CONFLICT WITH THE TEMPORARY CONSTRUCTION DETOUR PLAN.
- PROVIDE TYPE "B" BARRICADE WARNING LIGHTS HIGH INTENSITY ON SIGNS "D" AND ON CONSTRUCTION BARRICADES.
- THE "TEMPORARY CONSTRUCTION DETOUR PLAN" IS A MINIMUM GUIDELINE ONLY FOR THE MAINTENANCE AND PROTECTION OF TRAFFIC. A SPECIFIC MAINTENANCE AND PROTECTION OF TRAFFIC PLAN SHALL BE SUBMITTED TO THE ENGINEER FOR APPROVAL.
- FOR CONSTRUCTION ACCESS AT BOTH ENDS OF THE SITE, THE CONTRACTOR MAY, FOR CONVENIENCE, MOVE A SECTION OF THE TEMPORARY PRECAST CONCRETE BARRIER CURBS ON A DAY-TO-DAY BASIS ONLY WHILE PERSONNEL ARE ON SITE AND CONSTRUCTION OPERATIONS ARE PROCEEDING. OPENINGS IN THE BARRIER SHALL BE PROTECTED BY CONSTRUCTION BARRICADES TYPE III, AND THE DURATION THE OPENING IS PRESENT SHALL BE KEPT TO A MINIMUM. AT THE COMPLETION OF EACH WORK DAY, THE BARRIER AND BARRICADES SHALL BE RELOCATED TO THE CONFIGURATION SHOWN ON THE CONTRACTOR'S APPROVED MAINTENANCE AND PROTECTION OF TRAFFIC PLAN. PAVEMENT DAMAGE AS A RESULT OF MOVING TEMPORARY PRECAST CONCRETE BARRIER CURB SHALL BE THE SOLE RESPONSIBILITY OF THE CONTRACTOR.
- THE CONTRACTOR SHALL OBTAIN A CTDOT DISTRICT 2 ENCROACHMENT PERMIT PRIOR TO INSTALLATION OF TEMPORARY SIGNS IN STATE OF CONNECTICUT HIGHWAY RIGHT-OF-WAY.
- APPROXIMATE MILEAGE FOR SIGN "G" SHALL SHOW ON THE SIGN AND THE SIGN SHALL BE PLACED IN THE FIELD ACCORDINGLY.

NOTES:
1. SEE SHEET 13 FOR PROJECT NOTES AND REFERENCES.



TOWN OF HADDAM, CONNECTICUT
BEAVER MEADOW ROAD CULVERT REPLACEMENT

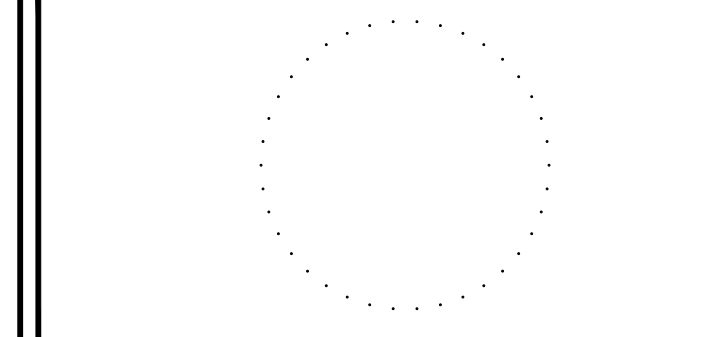
MAINTENANCE AND PROTECTION OF TRAFFIC PLAN

CONTRACT DOCUMENTS

ANY ALTERATIONS TO THIS DRAWING MADE WITHOUT THE EXPRESSED WRITTEN APPROVAL OF NATHAN L. JACOBSON & ASSOCIATES, INC. WILL BE AT THE SOLE RISK OF THE PERSON OR FIRM MAKING SUCH UNAUTHORIZED ALTERATIONS AND NATHAN L. JACOBSON & ASSOCIATES, INC. WILL NEITHER HAVE NOR ACCEPT ANY LIABILITY OR LEGAL EXPOSURE ARISING FROM SAID UNAUTHORIZED ALTERATIONS.

Nathan L. Jacobson & Associates, Inc.
88 Main Street P.O. Box 337
Chester, Connecticut 06412-0337
Tel: (860) 526-9591 Fax: (860) 526-5416
www.nlja.com
Consulting Civil and Environmental Engineers Since 1972

NOT VALID WITHOUT ORIGINAL SEAL



JOSEPH M. DILLON, P.E.
CT REGISTRATION No. 22903

© COPYRIGHT 2021 NATHAN L. JACOBSON & ASSOCIATES, INC. ALL RIGHTS RESERVED.

| REVISIONS | | |
|-----------|-------------|------|
| No. | DESCRIPTION | DATE |
| | | |
| | | |
| | | |

DATE: NOVEMBER 2021
SCALE: AS NOTED
PROJECT No.: 09840033
CADD FILE: 09840033MT
DESIGNED: JMD
DRAWN: AJG
CHECKED: GLJ

SHEET No.:
7 OF 13